

What are the locations of the red-light cameras?

Please visit www.miamisprings-fl.gov or www.mspd.us for additional information. Future red-light camera locations will be posted as they are determined.

What do I do if I receive a notice?

If you receive a notice, go to www.ViolationInfo.com and log on with the information provided on the notice. There you can view video of the incident and the images captured.

If the fine is not paid in a timely fashion, a Uniform Traffic Citation will be issued and increased penalties could be assessed including court costs.

What happens when you make a left or right-hand turn at an intersection utilizing a red-light camera?

If a vehicle is completely within the intersection at the time the light turns red, you will not be issued a violation.

A notice will not be issued for failure to stop at a red-light if the driver is making a right-hand turn in a careful and prudent manner at an intersection where right-hand turns are permissible.

Additional Resources

Check the following websites for more information about red-light running and other traffic issues:

Mark Wandall Traffic Safety Program

[Statutes & Constitution :View Statutes : Online Sunshine \(state.fl.us\)](#)

Insurance Institute for Highway Safety

[Red light running \(iihs.org\)](http://www.iihs.org)

Federal Highway Administration, Stop Red-Light Running Program

<http://safety.fhwa.dot.gov/intersection/>

Governors Highway Safety Association

<http://www.ghsa.org>

You can also get additional information at the Miami Springs Police Department website:

www.mspd.us



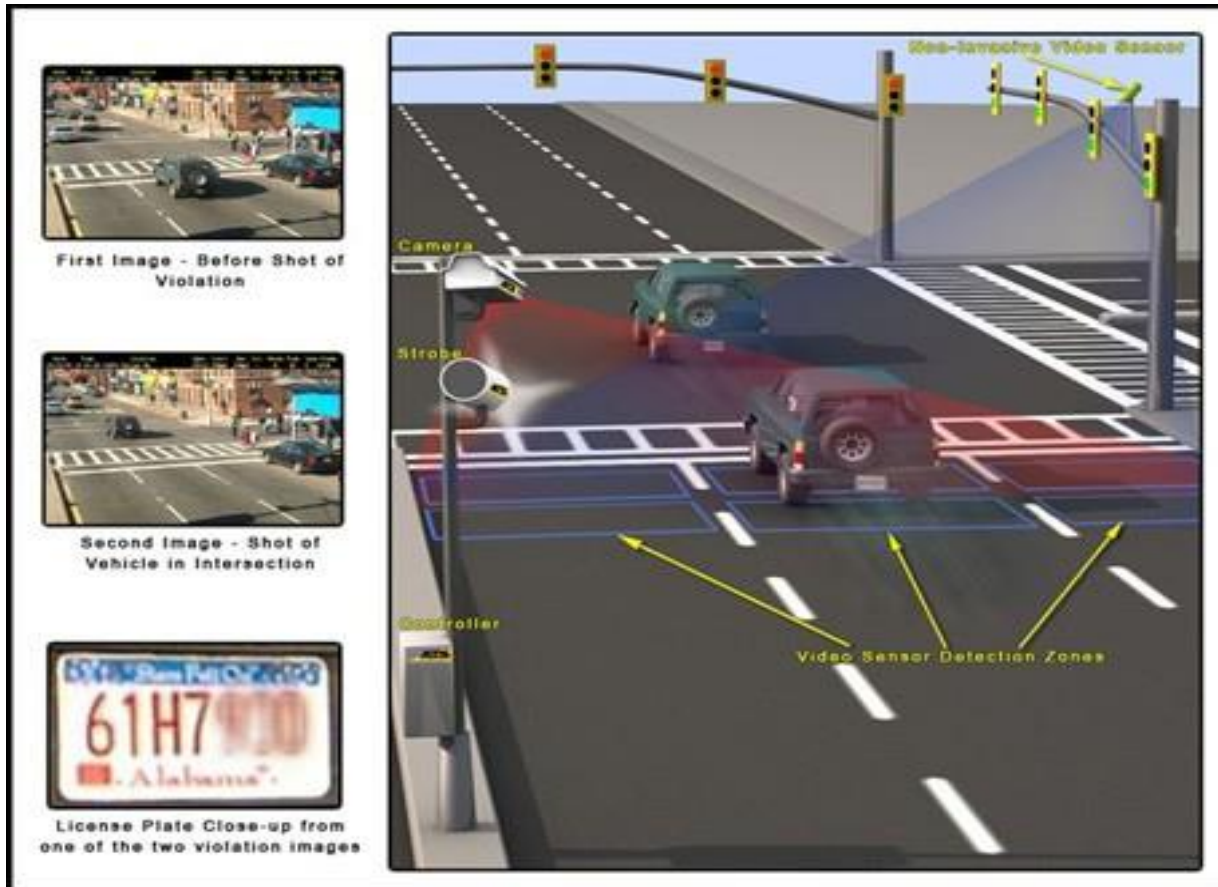
City of Miami Springs Red-Light Camera Enforcement & Intersection Safety Program

HOW DOES THE SYSTEM WORK?

First rear image: The “A” shot is captured from the rear approach showing: the scene of the violation including the back of the violating vehicle in front of the violation line; one or more visible red light signals; and a clear image of the license plate of the offending vehicle, all from the single, base image.

Second rear image: The “B” shot is also captured from the rear approach showing: the scene of the violation including the back of the violating vehicle after the rear axle has crossed the stop line and the vehicle has illegally entered the intersection; one or more visible red light signals; and a clear image of the license plate of the offending vehicle, all from the single, base image.

License plate crop: For the court and police department this is the most significant technology innovation in photo enforcement. The Axis™ Violation Processing System will create a magnified “crop” of the license plate from one of the images for easy viewing. The cropped license plate close-up is not a separate image, but rather a close-up view of the original violation image. This image can be taken from either of the two images captured.



Florida was the third most deadly state in the nation for red-light running fatalities in 2009. Across the United States, red-light runners killed an average of 885 people and injured 165,000 each year for the past decade. This year, the Insurance Institute for Highway Safety found red-light safety cameras in 14 large U.S. cities saved 159 lives in a five-year period and determined 815 more lives could have been saved if all 99 large cities had used these cameras.

The intersections where the red-light cameras have been installed in Miami Springs have been the scene of several serious traffic crashes, some of which resulted in fatalities. Unfortunately many occurred because of drivers who ran a red-light.

Nationally, public costs exceed \$14 billion per year, and more than half of the deaths in red light running crashes are other motorists and pedestrians. There is no doubt that red light runners are dangerous drivers who irresponsibly put others at risk. In America's cities — where too often the yellow light has come to symbolize "hurry up" instead of "slow down" — red light running is the leading cause of all urban automobile crashes.